



DTE6-2RN2



Enclosed Switches Series E6: Top Roller Arm Actuator, Adjustable with Steel Roller; 2NC 2NO DPDT Snap Action; 0.5 in - 14NPT conduit

Actual product appearance may vary.

Features

- Side or flange mount
- Momentary or maintained contact
- Grounding screw
- High capacity (22 amp) available
- Temperature range -32 °C to +71 °C [-25 °F to +160 °F]
- Zinc Die-Cast housing NEMA 1
- UL Recognized, file #E12252
- CSA Certified, file #LR41372
- NEMA 1, 3, 4 /IP66
- Pre-leaded or connector termination options

Potential Applications

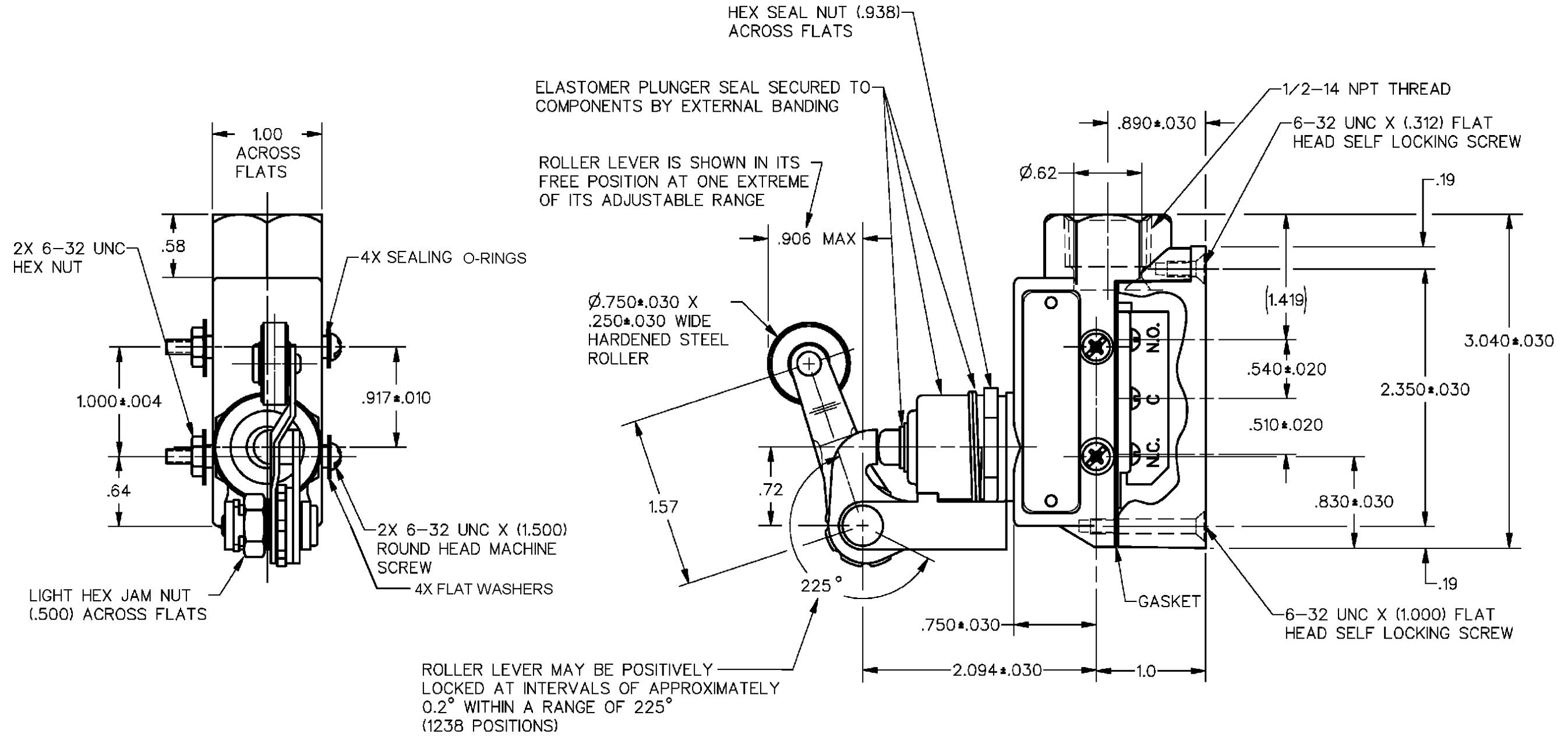
- Packaging equipment
- Special machinery
- Textile machinery
- Conveyors
- Construction machinery and equipment
- Printing trades machinery
- Overhead cranes and hoists

Description

MICRO SWITCH™ E6 (side mount) and V6 (flange mount) switches are offered with or without actuator seal boots. Both have a combination insulator/seal cemented inside the bottom enclosure. Lead washers are used to seal the mounting holes on side mount switches. All side mount switches are installed with #6 screws, except the BZE6-2RN7 (#8 screws). Removal of the bottom enclosure exposes the terminals for easy wiring.

Product Specifications	
Availability	Global
Operating Force (O.F.)	13,34 N max. [48 oz max.]
Release Force (R.F.)	1,67 N min. [6 oz min.]
Pretravel (P.T.)	7,92 mm max. [0.312 in max.]
Overtravel (O.T.)	5,56 mm min. [0.219 in min.]
Differential Travel (D.T.)	4,19 mm max. [0.165 in max.]
Product Type	Enclosed Switches
Actuator	Top Roller Arm
Lever Style	Roller - Adjustable
Circuitry	2NC 2NO DPDT Snap Action
Ampere Rating	10 A Ind./0.3 A Res./0.15 A Res.
Supply Voltage	125 Vac, 250 Vac/125 Vdc/250 Vdc
Housing Material	Zinc Die-Cast
Termination Type	0.5 in - 14NPT conduit
Housing Type	Split Housing, Side Mount
Series Name	E6/V6
Sealing	NEMA 1, 3, 4 /IP66
Approvals	UL recognized, CSA certified
CSA File #	LR41372
UL File #	E12252
Operating Temperature Range	-32 °C to 71 °C [-25 °F to 160 °F]
Comment	With seal boot on plunger; Lever field adjustable 360° horizontally and 225° vertically
UNSPSC Code	302119
UNSPSC Commodity	302119 Switches and controls and relays
Sealed	Industrial

DTE6-2RN2
 CATALOG LISTING
 PAGE 1 OF 1
 ISSUE 12
 RELEASE NO. SR-7735
 REPLACES
 REVISIONS
 A CO 73761
 SA V 8 OCT 92
 B CO 73855
 S M 21 APR 93
 C CO 77178B
 K D R 21 FEB 94
 D CO 81513E
 J A K 5 MAR 97
 E 0016895
 V K R 18 NOV 05
 F 0018962
 V K R 14 FEB 06
 DDM/CAD
 DRAWN
 SAV 8 OCT 92
 CHECK
 BP 18 NOV 05
 CHECK
 BP 14 FEB 06
 CHECK
 BP 14 FEB 06



THIS DRAWING COVERS A PROPRIETARY ITEM AND IS THE PROPERTY OF MICRO SWITCH, A DIVISION OF HONEYWELL. THIS DRAWING IS NOT TO BE COPIED OR USED WITHOUT THE APPROVAL OF MICRO SWITCH		THIRD ANGLE PROJECTION
CHARACTERISTICS	ELECTRICAL DATA	SCALE FULL
PRETRAVEL ——— .266 MAX	CONTACT ARRANGEMENT D P D T	DO NOT SCALE PRINT
DIFFERENTIAL TRAVEL ——— .165 MAX	L59 10A 125 OR 250 VAC 0.3A 125 VDC, 0.15A 250 VDC	UNLESS OTHERWISE SPECIFIED TOLERANCES ARE
OVERTRAVEL ——— .219 MIN		ONE PLACE (.0) ± .030
BASIC SWITCH REPLACEMENT ——— DT-2R3-A7		TWO PLACE (.00) ± .015
		THREE PLACE (.000) ± .005
		ANGLES ±
		WEIGHT .71 LB

- NOTES
- 1 - 6X 4-40 UNC X (.125) TERMINAL SCREW AND LOCKWASHER
 - 2 - ROLLER LEVER BRACKET ASSEMBLY MAY BE SET AT ANY POSITION AROUND AXIS OF PLUNGER
 - 3 - SEAL RATING : NEMA 1.3
IP 54